





Harmonds Wood Close, Broxbourne, EN10 7FE

**** OFFERED CHAIN FREE **** Westwood Leber are delighted to bring to the market this immaculately presented four double bedroom end of terrace family home on this quiet residential close in Broxbourne. This property offers fantastic living accommodation split over three floors, comprising a large modern kitchen/dining room and a bright and airy lounge on the first floor. Further benefits include a separate utility room, a shower room on the first floor, bathroom on the second floor and w/c on the first floor, a dressing area off the master bedroom and en-suite off the second bedroom, a single garage and off-street parking for multiple cars. An internal viewing is highly recommended!



WESTWOODLEBER

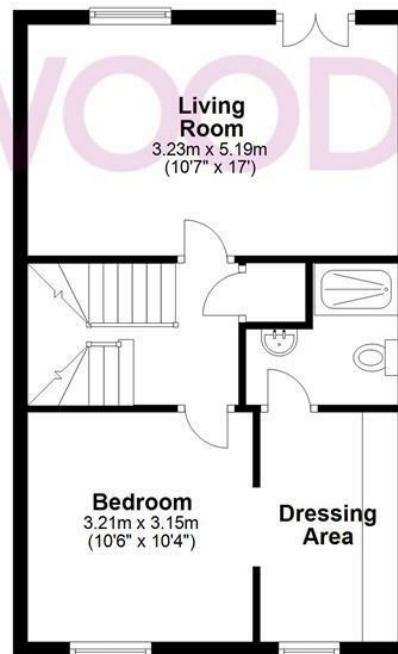
Ground Floor

Approx. 58.3 sq. metres (627.5 sq. feet)



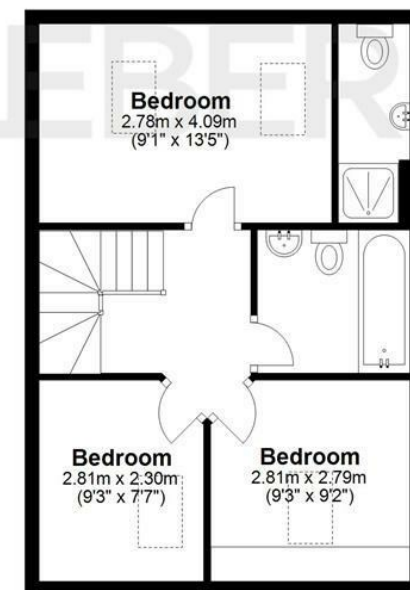
First Floor

Approx. 44.8 sq. metres (481.8 sq. feet)



Second Floor

Approx. 40.4 sq. metres (434.7 sq. feet)

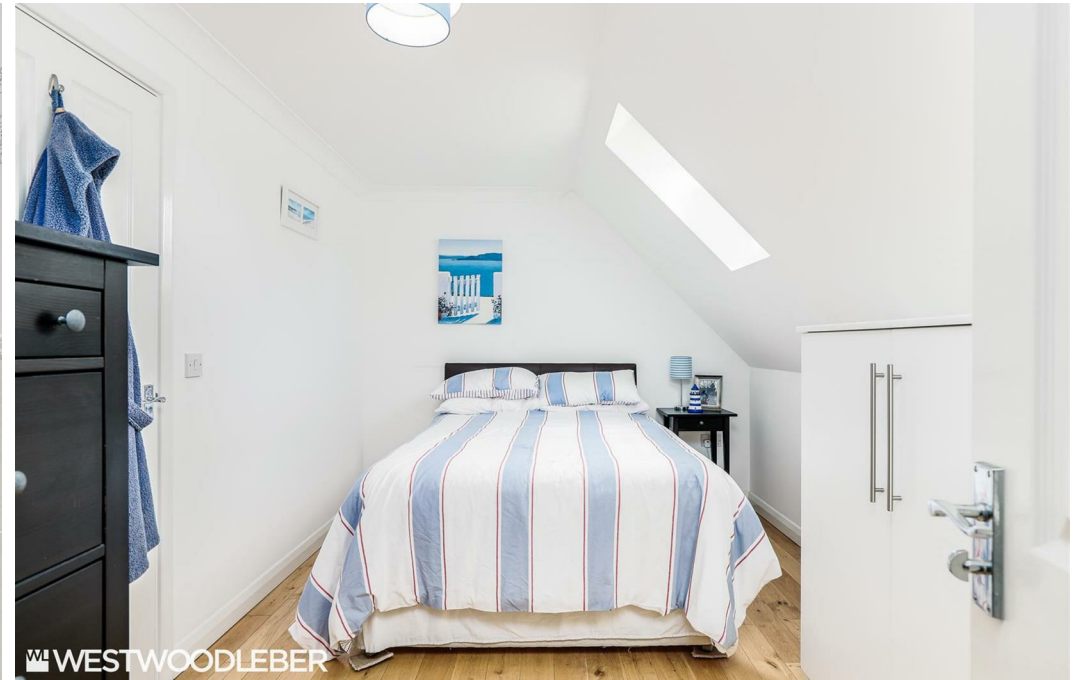


Total area: approx. 143.4 sq. metres (1544.0 sq. feet)

FOR ILLUSTRATIVE PURPOSES ONLY. NOT TO SCALE. Whilst every attempt had been made to ensure the accuracy of the floor plan shown, all measurements, positioning, fixtures, features, fittings and any other data shown are an approximate interpretation for illustrative purposes only and are not to scale. No responsibility is taken for any error, omission, misstatement or use of data shown. Property marketing provided by Westwood Leber.
Plan produced using PlanUp.













WESTWOODLEBER

WESTWOODLEBER
LET US GUIDE YOU HOME